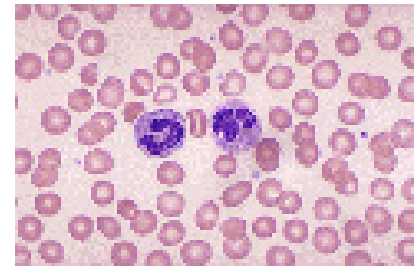
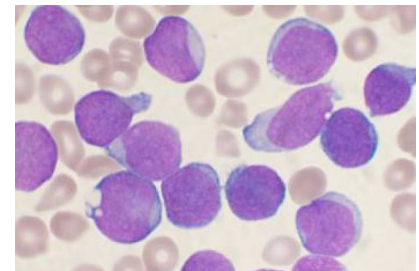


Our profession is divided into the following disciplines:

Haematology, where diseases of the blood and bone marrow, such as leukaemia or anaemia, are diagnosed. We work alongside pathologists to monitor these and other blood related diseases. We are expert at recognising abnormalities in blood cells, like malarial parasites, or lead poisoning. We monitor the blood thinning drugs that help prevent heart attacks and strokes, detect essential blood clotting factors, help diagnose and monitor haemophilia and other bleeding disorders.



Normal blood cells



Leukaemia cells



Transfusion Medicine, where blood, collected from donors, is typed and screened for life-saving transfusions, or made into essential blood products like platelets or Factor VIII. Our skills may be needed at any time, 24/7, to provide blood and blood products for motor vehicle accidents or other sudden traumas, surgery, and sometimes during birth, for mother or baby. We also test tissue and bone marrow for skin grafts, bone marrow and organ transplants.



The effects of rheumatoid arthritis

Immunology is where the body's response to disease is studied, often through the measurement of antibodies. In immune disorders it is the body's own overreaction to certain substances that causes harm. This field of science is expanding as immune disorders become more commonly recognised and diagnosed. Some of the diseases we help to diagnose are: rheumatoid arthritis, allergies, lupus, vasculitis (blood vessel disease), irritable bowel syndrome and various forms of cancer.

